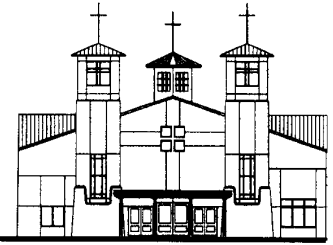


St. Joseph on the Rio Grande Church

5901 St. Joseph's Drive, NW
Albuquerque, NM 87120
(505) 839-7952
(505) 839-7955 Fax



Annual Financial Report July 1, 2008 – June 30, 2009

We are all called to be good and faithful stewards of the gifts provided by God not only as individuals but also as a faith community. The Finance Council would like to acknowledge the commitment of many of our parishioners who practice Stewardship. The Finance Council also strives to be good stewards of the treasures you have entrusted to us. This report shows our stewardship for the past fiscal year.

The expenses associated with the operation and administration of St. Joseph on the Rio Grande Parish are a wonderful sign of God's continued Providence helping us to fulfill the mission we have as members of the Catholic Church. These expenses reflect what it costs to operate a large parish and church building. We are fulfilling our Mission Statement "To Make Jesus Known" through our worship in the Mass, all the Sacraments we celebrate, our prayer and faith formation classes for young and old, and the many ministries we have which support the needs of both parishioners and others in the local community.

In response to the needs of our parish, we are expanding the Gathering Space to provide us with more meeting and storage space as well as expanding the Offices to provide an office for Sr. Kathleen and other hires, which are being contemplated. As of June 30, 2008, we had a balance of \$712,614 in our Building Fund. This fund has increased \$295,348 in the last 12 months. This increase comes from four sources: 1) your continued use of the Building Fund envelopes; 2) rebates from the Annual Catholic Appeal; 3) interest earned; and 4) the excess of operational income over operational expenses. We anticipate that the current construction project will deplete most of our Building Fund, so your continued support of the Building Fund is important for the future Parish Hall which is the next phase of our building project.

St. Joseph on the Rio Grande has always responded generously to those in need. We tithe 5% of our general and loose collection to help alleviate world hunger and poverty. Last year, we sent Cross International \$42,081 to help the Reencontro Orphanage in Mozambique, Africa. Closer to home, through our monthly St. Vincent de Paul collection, we have been able to touch the lives of many people in our community through donations of \$98,794.

This report is an indication of the many ways in which God has blessed our parish. Please review it and give prayerful consideration to your own stewardship. Much has been accomplished. Much more still needs to be done. Your faithful stewardship is key to achieving our goals for this new fiscal year.

Msgr. Lambert Joseph Luna
Pastor

Chris Archuleta
Finance Council Chairperson

Annual Financial Report

July 1, 2008 through June 30, 2009

CHURCH INCOME

SUNDAY COLLECTIONS	721,403
HOLY DAY COLLECTIONS	21,356
LOOSE COLLECTIONS	93,426
MISC INCOME	825
RENTAL INCOME	1,000
INSURANCE REIMBURSEMENT	3,171
INTEREST INCOME	24,270
DESIGNATED DONATIONS - POSTAGE	961
DESIGNATED DONATIONS - FLOWERS	4,967
DESIGNATED DONATIONS - MSGR INVESTITURE	25,773
GRANTS	2,836
ARTICLES FOR RESALE - RE	500
RELIGIOUS EDUCATION FEES	11,645
STOLE FEES	8,270
COPY MACHINE REIMBURSEMENTS	762
FUNDRAISING - MINISTRIES	2,665
FEAST DAY	1,635
BOOKS	1,384
CERTIFICATES	50
ACA REBATE	<u>14,264</u>
	941,164

CHURCH EXPENSES

ALTAR WORSHIP SUPPLIES	12,234
FLOWERS	7,920
MISSALETTES	1,273
CALENDARS	1,039
PASTORAL SALARIES	42,378
DEACON STIPENDS	11,000
PASTORAL ASSOCIATE MILEAGE	211
CONF & WORKSHOPS - CLERGY	3,162
VISITING CLERGY STIPENDS	5,719
MAINTENANCE SALARIES	40,279
CLEANING COMPANY	17,224
MAINTENANCE AUTO	1,567
UTILITIES	25,415
REPAIR & MAINTENANCE	15,671
LANDSCAPING MAINTENANCE	5,234
MAINTENANCE CONTRACTS	2,704
FEAST DAY	5,000
MSGR INVESTITURE	31,360

FIXED EXPENSES

INSURANCE & TAXES
PARISH ASSESSMENT TO THE
 ARCHDIOCESE

PARISH ADMINISTRATIVE EXPENSES

OFFICE SALARIES
ADMINISTRATIVE EXPENSES

ST CLARE HALL

REPAIRS & MAINTENANCE
MINISTRY ROOM EXPENSES
UTILITIES

RECTORY EXPENSES

RESIDENT SERVICES
AUTO DEPRECIATION
AUTO MAINTENANCE
AUTO INSURANCE
UTILITIES
REPAIRS & MAINTENANCE

YOUTH FAITH FORMATION

SALARIES
STUDENT TEXTBOOKS
EXPENSES

HIGH SCHOOL YOUTH GROUP

SALARIES
EXPENSES

SCHOOL SUBSIDY

CAPITAL EXPENSE - PHASE II
CAPITAL EXPENSE - FURN & EQUIP

SOCIAL SERVICE

DONATIONS TO ORGANIZATIONS
 (CROSS INTERNATIONAL)
DONATIONS TO PARISHES
DONATIONS TO SCHOOLS
DONATIONS TO POOR

MINISTRY EXPENSES

TOTAL EXPENSES

19,326	<u>EXCESS OF OPERATIONAL INCOME OVER</u>	
97,116	<u>OPERATIONAL EXPENSES</u>	19,596
	FUND IN TRUST - MANNA	2520
	FUND IN TRUST - CONSOLATION	3223
	FUND IN TRUST - ROSARY MAKERS	3294
	FUND IN TRUST - CHRISTMAS BASKETS	1459
71,791	FUND IN TRUST - VBS	1163
109,731	FUND IN TRUST - 5:00 CHOIR	227
	FUND IN TRUST - YOUTH GROUP	425
5922	ASSETS	
279	CHECKING ACCOUNT	68,293
9,034	SAVINGS : BUILDING FUND	1,208,573
	SAVINGS : PASSBOOK	244,424
	SAVINGS : SCHOOL SUBSIDY	35,286
3,106	SAVINGS : INSURANCE	44,799
6,450	SAVINGS : REPAIR & MAINTENANCE	63,480
1,293	PETTY CASH	<u>150</u>
753		
1,898	TOTAL	1,665,005
620		
	SECOND COLLECTIONS	
	St Vincent de Paul	98,794
42,074	Seminary	2378
10,732	Mission Sunday	1814
9461	Campaign for Human Development	1437
	Retired Religious	2120
	Bishops' Relief	2378
5,006	Catholic Missions	3057
5,064	Peter's Pence	1924
	Rice Bowl	<u>2016</u>
39,300	TOTAL	115,918
152,,891	STATISTICS	
11,103	Number of families	1835
	Average Weekly collection	\$13,949
	Baptisms	81
42,081	First Communion	99
	Confirmations	79
8,050	Marriages	32
6,300	Funerals	28
960		
31,837		
921,568		

MEMBERS OF THE PARISH FINANCE
COUNCIL

Christ Archuleta - Chairperson
 Jim Sands Albino Gallegos
 James Dickey CG Connor

Operational & Building Fund Income

Collection	\$836,185
Building Fund	269,775
Interest	24,270
Program Fees	28,587
ACA Rebate	14,264
Other	<u>37,858</u>
Total	1,210,939

Expenses

Operating Costs	\$258,745
Administration	181,522
Fixed Expenses	116,442
Education	111,637
Ministries	31,837
Outreach	57,391
Capital Expense - Phase I	<u>163,994</u>
Total	921,568

